



153 Dunstone View

Plymstock, Plymouth, PL9 8QJ

£1,200 PCM



Available from April 2025 is this detached bungalow. Accommodation includes three bedrooms along with a modern bathroom and kitchen/ breakfast room. There is a lounge and office area within the converted garage. Lovely sized garden with views.

Unfurnished and available on a long term basis.



153 DUNSTONE VIEW, PLYMSTOCK, PLYMOUTH PL9 8QJ
Accommodation (Accommodation)

uPVC entrance door leading into the entrance hall.

ENTRANCE HALL

Built-in cupboard housing the gas boiler. Further built-in cupboard with slatted shelving. Door leading into the lounge.

LOUNGE 13'4" x 11'8" (4.06 x 3.56 (4.07 x 3.57))

Double-glazed sliding patio doors to the front.

KITCHEN/DINING ROOM 19'10" x 7'0" including kitchen units (19'11" x 6' (6.05 x 2.13 including kitchen units (6.06 x))

Series of contemporary-style matching eye-level and base units with roll-edged work surfaces. Inset single-drainer sink unit. Under-counter space for a fridge and freezer. Space and plumbing for washing machine. Built-in 4-ring gas hob with extractor hood above and electric oven beneath. Double-glazed windows to the front and side. Door giving access to the side and rear. Further door leading into the playroom/office.

PLAYROOM/OFFICE 10'3" x 7'3" (10'4" x 7'4") (3.12 x 2.21 (3.14 x 2.225))

A useful room which could be used as an office, a family room or an occasional extra bedroom. Window to the side. Skylight.

FAMILY BATHROOM 6'7" x 5'5" (2.01 x 1.65)

White modern suite including panel bath with shower unit and spray attachment above with tiled area surround, pedestal wash handbasin and low-level toilet. Obscured double-glazed window to the side. Vertical towel rail/radiator.

BEDROOM ONE 11'4" x 10'6" (3.45 x 3.20 (3.46 x 3.22))

Double-glazed window to the rear overlooking the garden.

BEDROOM TWO 10'5" x 9'1" (3.18 x 2.77)

Double-glazed window to the rear overlooking the garden.

BEDROOM THREE 7'9" x 7'4" (2.36 x 2.24 (2.37 x 2.26))

Double-glazed window to the side.

OUTSIDE

The property is approached via a sloped drive leading down to the store with an area of garden laid to lawn with mature shrubs and trees. A gravel path extends down both sides of the property through to the rear. The rear garden is enclosed by fencing. From the rear there are lovely views towards Dartmoor and the surrounding countryside.

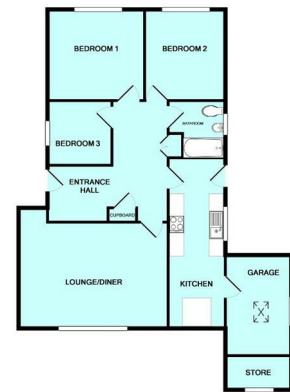
STORE

Up-&-over door to the front.

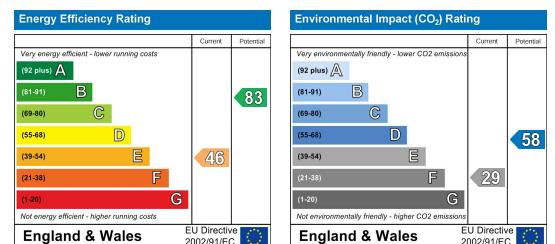
Area Map



Floor Plans



Energy Efficiency Graph



These particulars, whilst believed to be accurate are set out as a general outline only for guidance and do not constitute any part of an offer or contract. Intending purchasers should not rely on them as statements of representation of fact, but must satisfy themselves by inspection or otherwise as to their accuracy. No person in this firm's employment has the authority to make or give any representation or warranty in respect of the property.